

FIRST QUARTER

1Q

EPSOM, SURREY KT19 9QN

**MODERN HIGH QUALITY
FLEXIBLE BUSINESS UNITS
TO LET**

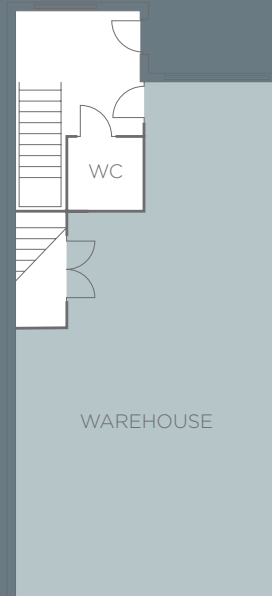
firstquarterepsom.com

FIRST QUARTER 10Q

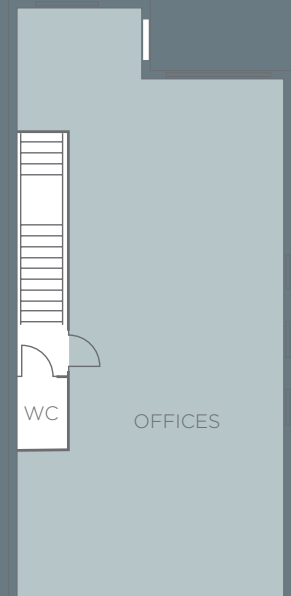
A development of modern 2 storey business units offering a mix of high quality offices and warehouse business space

First Quarter is less than half a mile from Epsom Town Centre and is situated on Blenheim Road in the Longmead Estate, Epsom's premier business location.

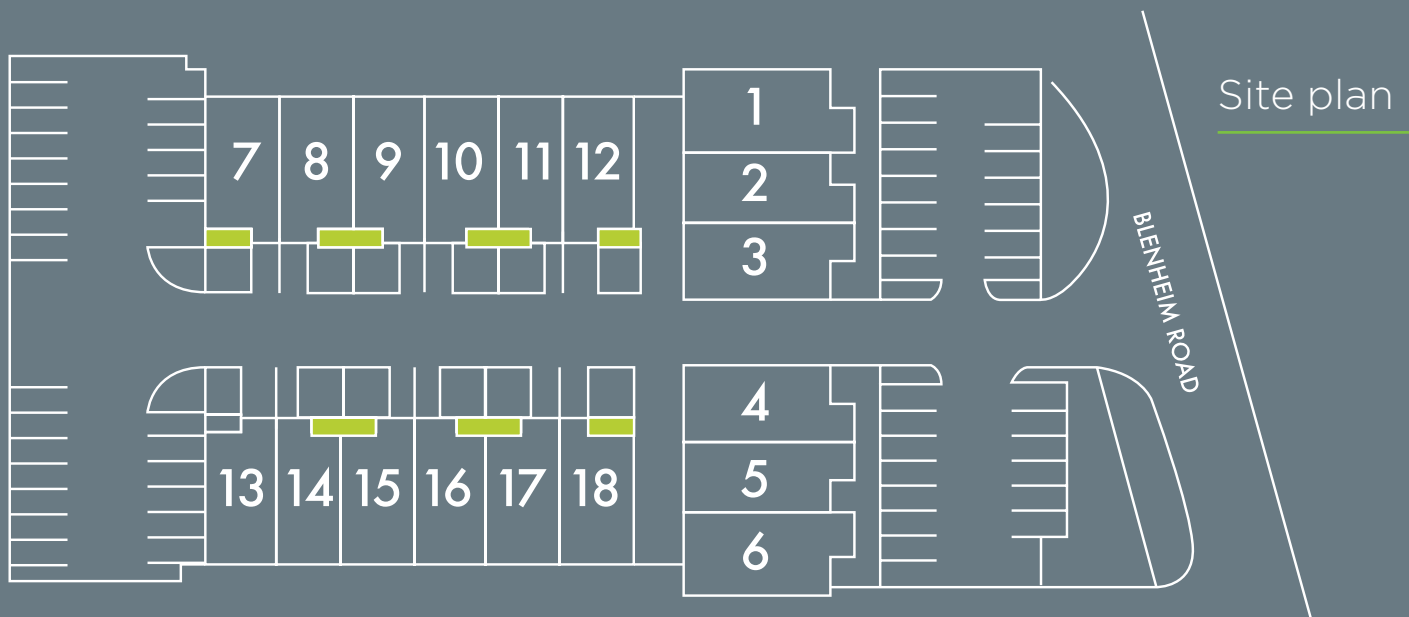
Epsom is ideally situated for access to the M25, the A3, central London, Heathrow and Gatwick Airports. Epsom Station has a regular service to Waterloo, Victoria and London Bridge.



Typical ground floor plan.



Typical first floor plan.



Description

The accommodation comprises refurbished first floor offices with open plan ground floor warehouse / light industrial space which benefits from the following:

Amenities Warehouse

- 3 phase power
- Fluorescent lighting
- Roller shutter loading door
- Gas central heating
- Eaves height of 10' 4" (3.15 m)
- Accessible toilet
- Loading bay

Amenities First Floor Offices

- Fully carpeted
- 3 compartment perimeter trunking
- Suspended ceiling
- Recessed fluorescent lighting
- Ceiling mounted comfort cooling unit
- Gas fired central heating
- Tea station
- Double glazed windows throughout
- Toilet
- On-site parking

